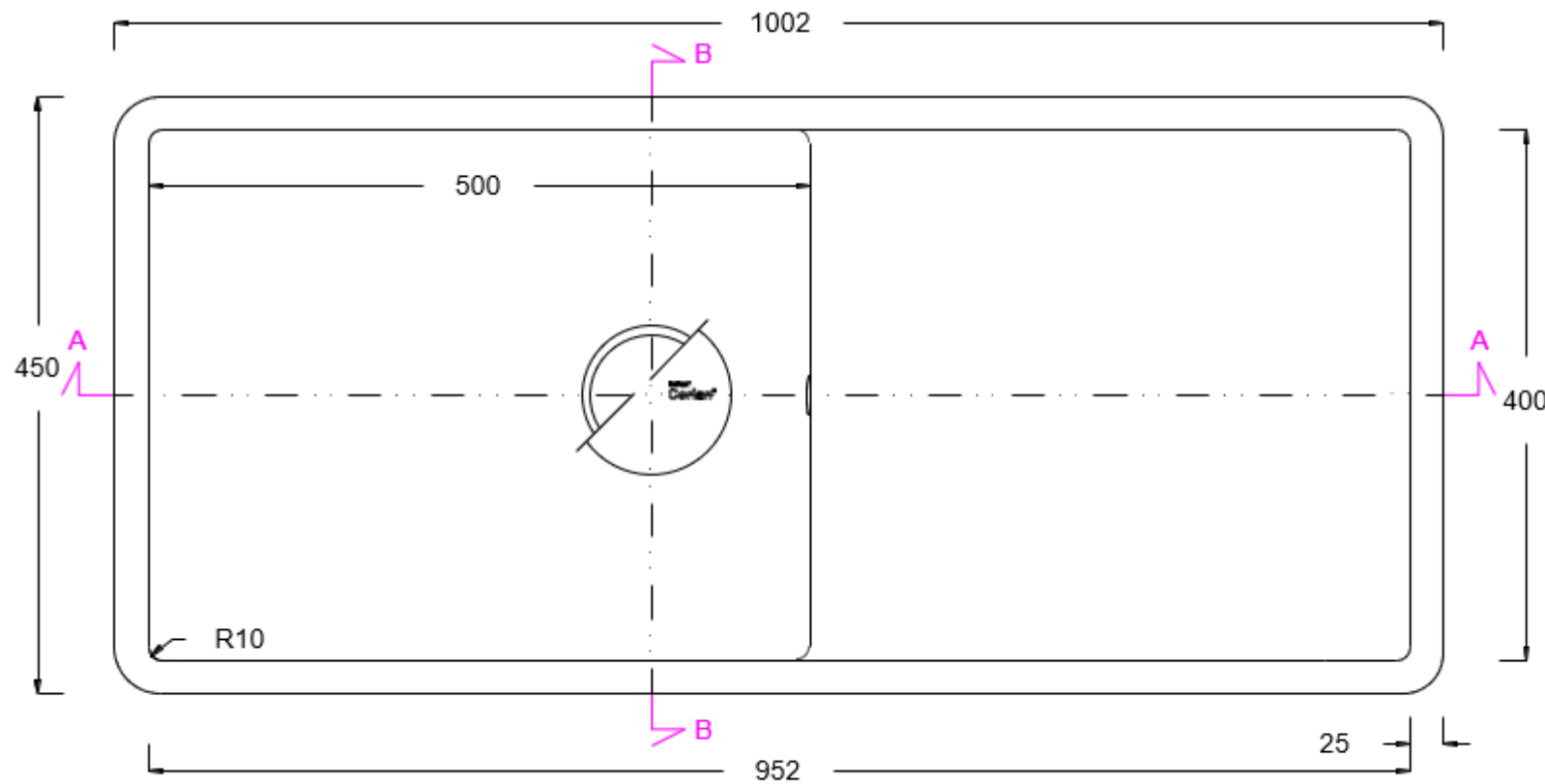


Corian® Specification Sheet : 9920 Integrated Sink

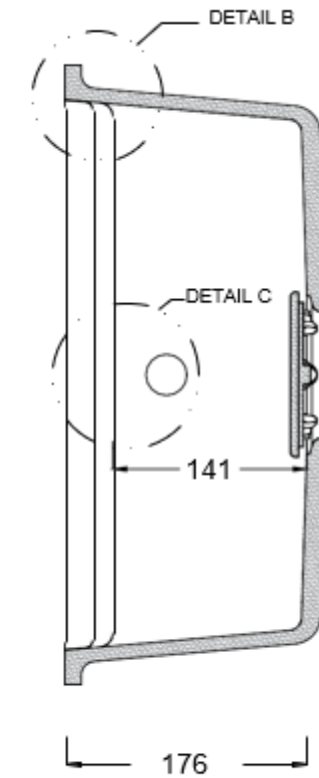
[Revised August 2021]

Notes:

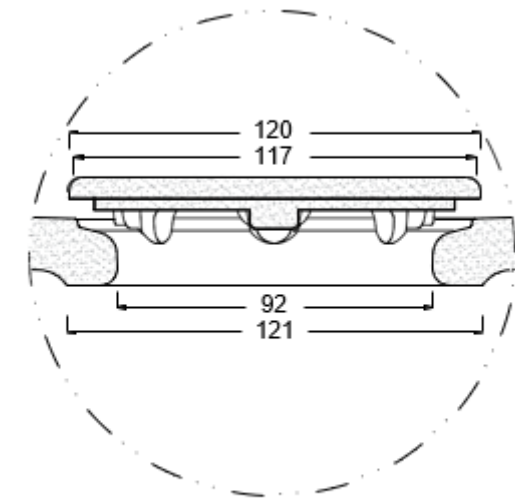
Please note that in order to position the dishwasher below the drainer section of the 9920, the work surface must be at a minimum height of 900mm from the floor.



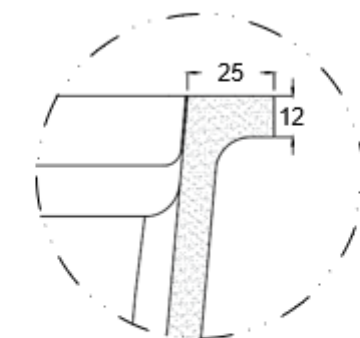
PLAN VIEW



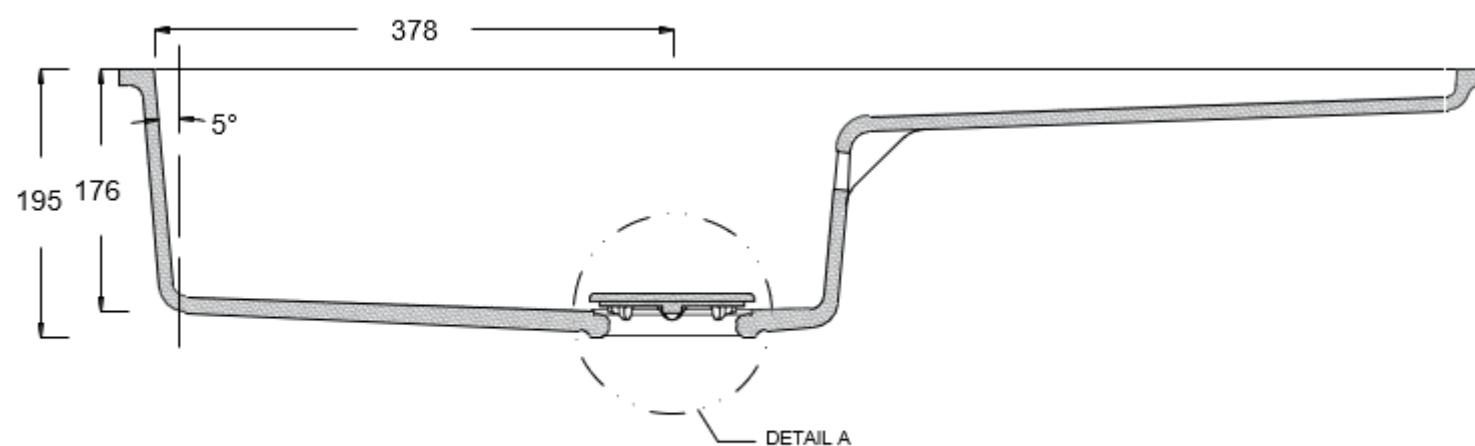
SECTION B:B



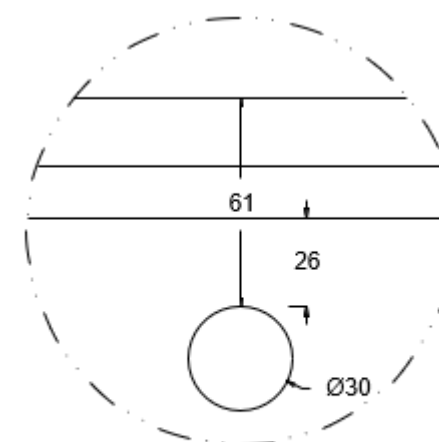
DETAIL A
SCALE: 1:2



DETAIL B
SCALE: 1:2



SECTION A:A



DETAIL C
SCALE: 1:2

CASF Australia
Unit 3, 208 Walters Road, Arndell Park NSW 2148
Tel: 1300 795 044
Email: projects@casf.com.au

casf
your space your way

CORIAN®
SOLID SURFACE